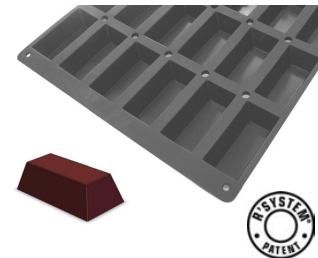


- + Moul'flex Pro, Professional non-stick silicone moulds
- + Size 600x400mm or 1 / 1 GN
- + Use for baking and freezing -40 °C to +300 °C
- + Easy removal of baked items
- + Made from foodgrade silicone
- + Economic as optimizes the number of fingerprints on the surface
- + perfect heat convection
- + Reduction of the cooking time due to perforation R'System
- + Designed for intensive use

#### Mini cakes mould

Item No.	Description	Length (mm)	Width (mm)	Height (mm)	Tray size (mm)	Sales Multiple
67301	20 Mini cakes	100	50	30	530x325mm GN 1/1	1
67303	30 Mini cakes	100	50	30	600x400mm	1



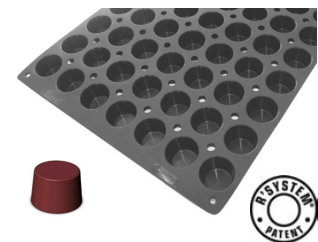
#### Florentins mould

Item No.	Description	Height (mm)	Diameter (mm)	Tray size (mm)	Sales Multiple
67305	40 Florentins	11	60	600x400mm	1



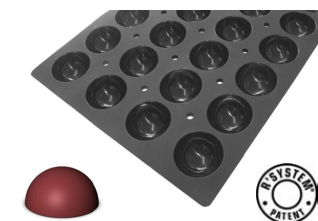
#### Mini muffins mould

Item No.	Description	Height (mm)	Diameter (mm)	Tray size (mm)	Sales Multiple
67307	70 Mini muffins	30	45	600x400mm	1



#### Hemisphere mould

Item No.	Description	Height (mm)	Diameter (mm)	Tray size (mm)	Sales Multiple
67310	18 Hemispheres	35	70	530x325mm GN 1/1	1
67312	28 Hemispheres	35	70	600x400mm	1

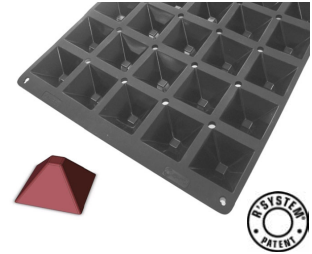


# DEBUYER | MOUL'FLEX PRO

Tomkin

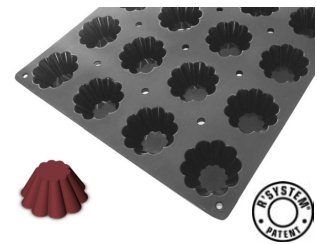
## Mini pyramid mould

Item No.	Description	Length (mm)	Width (mm)	Height (mm)	Tray size (mm)	Sales Multiple
67313	28 Mini pyramids	68	68	34	530x325mm GN 1/1	1
67315	35 Mini pyramids	68	68	34	600x400mm	1



## Mini Brioche mould

Item No.	Description	Height (mm)	Diameter (mm)	Tray size (mm)	Sales Multiple
67317	24 Mini brioche	35	77	600x400mm	1



## Madeleine mould

Item No.	Description	Length (mm)	Width (mm)	Height (mm)	Tray size (mm)	Sales Multiple
67320	44 Madeleines	80	45	18	600x400mm	1



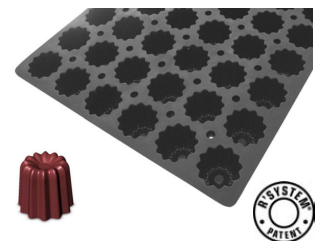
## Fluted kougloff mould

Item No.	Description	Height (mm)	Diameter (mm)	Tray size (mm)	Sales Multiple
67325	35 Fluted kougloffs	34	72	600x400mm	1



## Fluted bordelais mould

Item No.	Description	Height (mm)	Diameter (mm)	Tray size (mm)	Sales Multiple
67322	54 Fluted bordelais	50	55	600x400mm	1



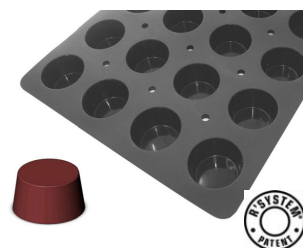
**Contact Tomkin** New South Wales 02 8665 4688  
Victoria, Tasmania 03 9388 9999  
Western Australia 08 9259 1516

Queensland 0418 403 686 or 07 3252 1277  
South Australia, Northern Territory 08 8297 1122  
[sales@tomkin.com.au](mailto:sales@tomkin.com.au) [www.tomkin.com.au](http://www.tomkin.com.au)

Distributed by:

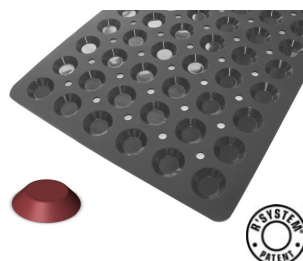
#### Muffin mould

Item No.	Description	Height (mm)	Diameter (mm)	Tray size (mm)	Sales Multiple
67327	24 Muffins	40	70	530x325mm GN 1/1	1
67330	24 Muffins	40	70	600x400mm	1



#### Mini Tartlets mould

Item No.	Description	Height (mm)	Diameter (mm)	Tray size (mm)	Sales Multiple
67332	40 Mini tartlets	15	50	530x325mm GN 1/1	1
67335	60 Mini tartlets	9	45	600x400mm	1



#### Yule log mould transparent

Item No.	Description	Length (mm)	Width (mm)	Height (mm)	Tray size (mm)	Sales Multiple
67337	4 Yule logs	500	80	63	600x400mm	1
67338	4 Yule logs	500	70	70	600x400mm	1



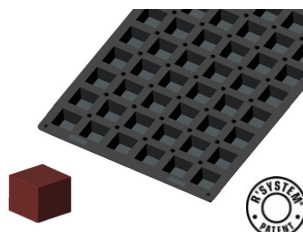
#### Mini cake mould

Item No.	Description	Height (mm)	Diameter (mm)	Tray size (mm)	Sales Multiple
67340	12 Mini cakes	10	120	600x400mm	1
67342	6 Mini cakes	10	160	600x400mm	1



#### Cube mould

Item No.	Description	Length (mm)	Width (mm)	Height (mm)	Tray size (mm)	Sales Multiple
67345	54 Cubes	45	45	45	600x400mm	1



Contact Tomkin New South Wales 02 8665 4688  
Victoria, Tasmania 03 9388 9999  
Western Australia 08 9259 1516

Queensland 0418 403 686 or 07 3252 1277  
South Australia, Northern Territory 08 82971122  
sales@tomkin.com.au www.tomkin.com.au

Distributed by: