

de BUYER products

Complimenting the existing de Buyer range, Tomkin introduces two new Mandolines and a range of Moul'flex Pro non-stick silicone moulds.

La Mandoline ULTRA



La Mandoline Ultra: Professional fruit & vegetable slicer

- ✓ **Professional** • Satin polished stainless steel and polymer composite • Horizontal double-blade made of high-quality cutlery stainless steel • Julienne blades made of heavy duty professional stainless steel • Integrated cube-system patented
- Stand for Julienne blade storage under the mandoline
- Practical horizontal double-blade stick resistant guide plate

- ✓ **Efficient** • Thickness from ultra fine slices to 1cm
- Cubes 2/4/10mm, Julienne 2/4/10mm, slices, losanges, crinkle and waffle cuts
- ✓ **Practical & easy** • Complete with: • 2 folding feet
- double horizontal blade (straight and serrated)
- 3 Julienne blades 2, 4 and 10mm • receptacle/slider to hold fruits and vegetables • Ergonomic round plastic pusher
- ✓ **Safe** • Secure protective pusher • Easy to handle.

La Mandoline Ultra		
Item No.	Description	Sales Multiple
34250	Mandoline ultra with 1 double blade + 3 Julienne blades	1
34252	Replacement julienne blade 2mm	1
34253	Replacement julienne blade 4mm	1
34254	Replacement julienne blade 10mm	1
34255	Replacement double horizontal blade (straight and serrated)	1





KOBRA 19.3° V: Professional fruit & vegetable slicer

- ✓ **Professional** • Stainless steel and polymer composite
- Technically inspired by La Mandoline professional model
- ✓ **Efficient** • V-shaped blade: blade penetrates easily
- Optimised cutting angle at 19.3° • Cuts all fruits and vegetables with ease and perfection, soft skins included
- Micro-serration of the blade enables the thinnest cut whilst preserving flesh composition

- ✓ **Practical & easy** • Stainless upper plate allows easy movement and sliding of the food • Easy thickness adjustment mechanism up to 5mm • Ergonomic handle for natural grip • Easy cleaning • Dishwasher safe
- ✓ **Compact** • Optimised space saving: 368x80x121mm
- The pusher clips under the chassis for easy storage.
- ✓ **Safe** • Protective pusher : no contact with blade during use • Silicone moulded anti-sliding handle • Anti-skid feet



Kobra Mandoline

Item No.	Description	Sales Multiple
34240	Kobra Mandoline with V blade	1

Moul'flex Pro



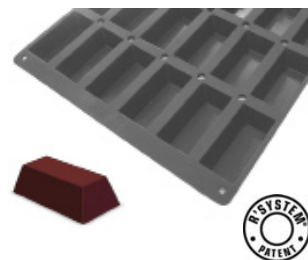
Moul'flex Pro non-stick silicone moulds

- ✓ **Professional** • Size 600x400mm or 1 / 1 GN • Use for baking and freezing -40°C to +300°C • Easy removal
- Made from foodgrade silicone • Designed for intensive use

- ✓ **Economic** • Optimizing the number of fingerprints on the surface • perfect heat convection • Reduction of the cooking time due to perforation R'System

Mini cakes mould

Item No.	Description	Length (mm)	Width (mm)	Height (mm)	Tray size (mm)	Sales Multiple
67301	20 Mini cakes	100	50	30	530x325mm GN 1/1	1
67303	30 Mini cakes	100	50	30	600x400mm	1



Florentins mould

Item No.	Description	Height (mm)	Diameter (mm)	Tray size (mm)	Sales Multiple
67305	40 Florentins	11	60	600x400mm	1



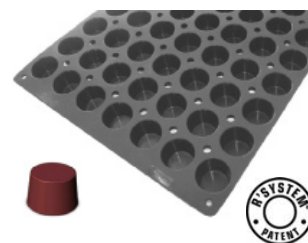
New South Wales 02 8665 4688
Victoria, Tasmania 03 9388 9999
Western Australia 08 9259 1516

Queensland 0418 403 686 or 07 3252 12 77
South Australia, Northern Territory 08 8297 1122
sales@tomkin.com.au www.tomkin.com.au

Distributed by:

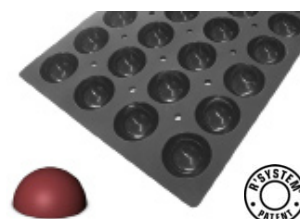
Mini muffins mould

Item No.	Description	Height (mm)	Diameter (mm)	Tray size (mm)	Sales Multiple
67307	70 Mini muffins	30	45	600x400mm	1



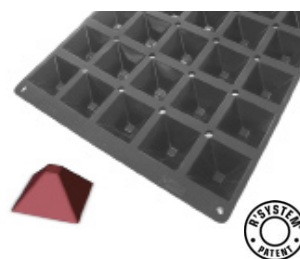
Hemisphere mould

Item No.	Description	Height (mm)	Diameter (mm)	Tray size (mm)	Sales Multiple
67310	18 Hemispheres	35	70	530x325mm GN 1/1	1
67312	28 Hemispheres	35	70	600x400mm	1



Mini pyramid mould

Item No.	Description	Length (mm)	Width (mm)	Height (mm)	Tray size (mm)	Sales Multiple
67313	28 Mini pyramids	68	68	34	530x325mm GN 1/1	1
67315	35 Mini pyramids	68	68	34	600x400mm	1



Mini Brioche mould

Item No.	Description	Height (mm)	Diameter (mm)	Tray size (mm)	Sales Multiple
67317	24 Mini brioches	35	77	600x400mm	1



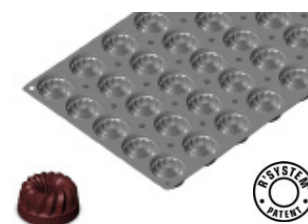
Madeleine mould

Item No.	Description	Length (mm)	Width (mm)	Height (mm)	Tray size (mm)	Sales Multiple
67320	44 Madeleines	80	45	18	600x400mm	1



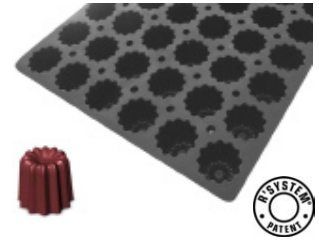
Fluted kougloff mould

Item No.	Description	Height (mm)	Diameter (mm)	Tray size (mm)	Sales Multiple
67325	35 Fluted kougloffs	34	72	600x400mm	1



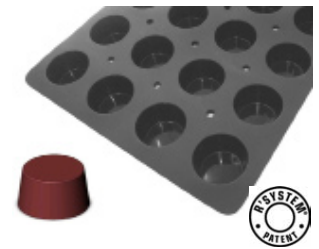
Fluted bordelais mould

Item No.	Description	Height (mm)	Diameter (mm)	Tray size (mm)	Sales Multiple
67322	54 Fluted bordelais	50	55	600x400mm	1



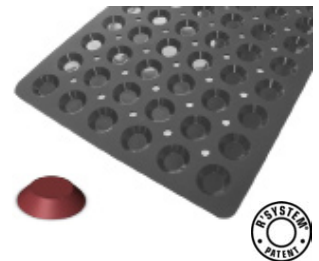
Muffin mould

Item No.	Description	Height (mm)	Diameter (mm)	Tray size (mm)	Sales Multiple
67327	24 Muffins	40	70	530x325mm GN 1/1	1
67330	24 Muffins	40	70	600x400mm	1



Mini Tartlets mould

Item No.	Description	Height (mm)	Diameter (mm)	Tray size (mm)	Sales Multiple
67332	40 Mini tartlets	15	50	530x325mm GN 1/1	1
67335	60 Mini tartlets	9	45	600x400mm	1



Yule log mould transparent

Item No.	Description	Length (mm)	Width (mm)	Height (mm)	Tray size (mm)	Sales Multiple
67337	4 Yule logs	500	80	63	600x400mm	1
67338	4 Yule logs	500	70	70	600x400mm	1



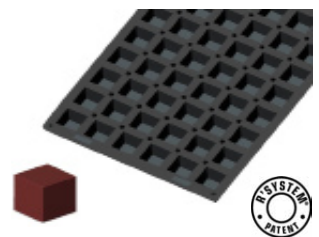
Mini cake mould

Item No.	Description	Height (mm)	Diameter (mm)	Tray size (mm)	Sales Multiple
67340	12 Mini cakes	10	120	600x400mm	1
67342	6 Mini cakes	10	160	600x400mm	1



Cube mould

Item No.	Description	Length (mm)	Width (mm)	Height (mm)	Tray size (mm)	Sales Multiple
67345	54 Cubes	45	45	45	600x400mm	1



New South Wales 02 8665 4688
Victoria, Tasmania 03 9388 9999
Western Australia 08 9259 1516

Queensland 0418 403 686 or 07 3252 1277
South Australia, Northern Territory 08 8297 1122
sales@tomkin.com.au www.tomkin.com.au

Distributed by: